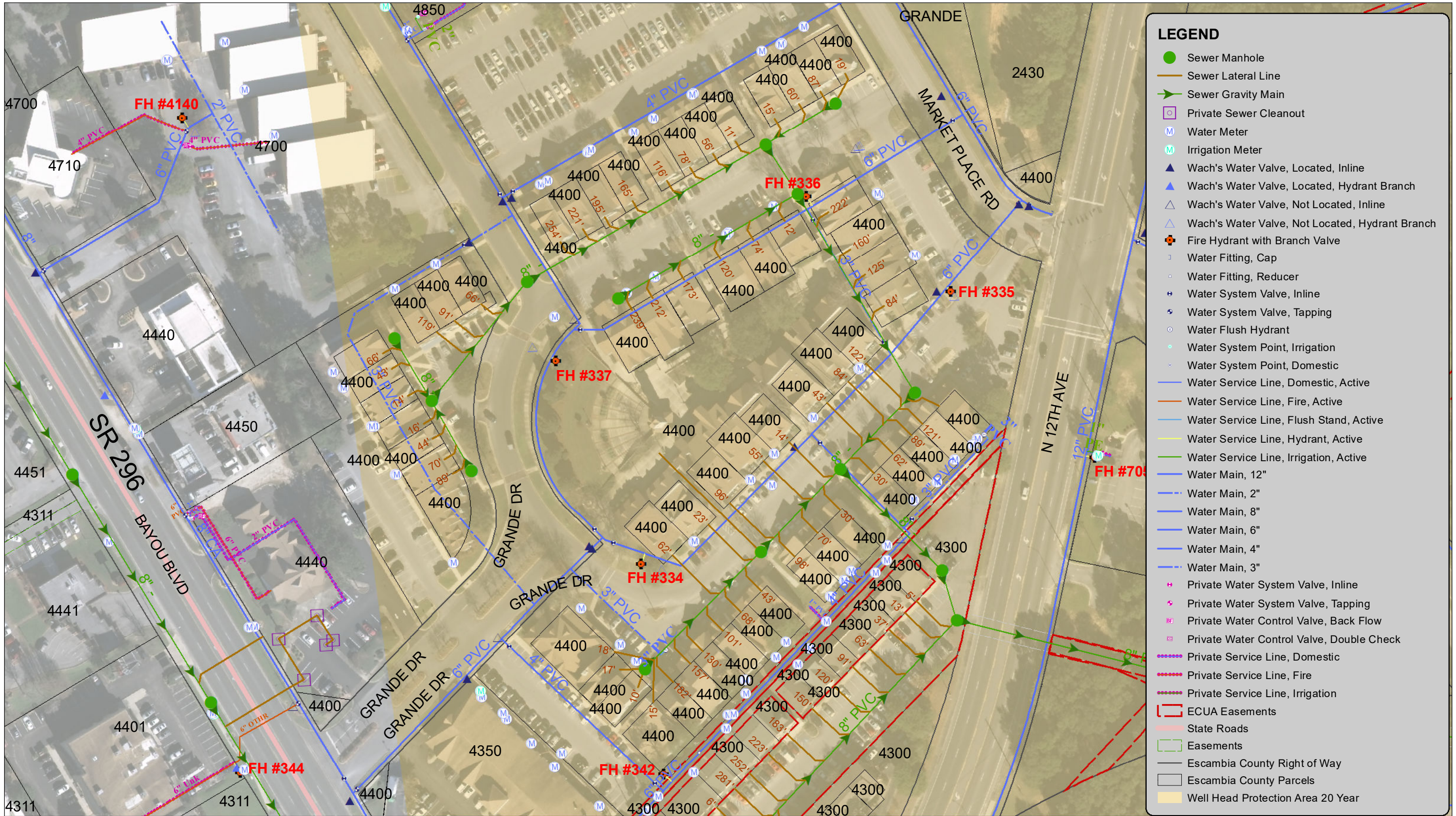


4400 Bayou Blvd - Cordova Square



LEGEND	
●	Sewer Manhole
—	Sewer Lateral Line
→	Sewer Gravity Main
□	Private Sewer Cleanout
M	Water Meter
M	Irrigation Meter
▲	Wach's Water Valve, Located, Inline
▲	Wach's Water Valve, Located, Hydrant Branch
△	Wach's Water Valve, Not Located, Inline
△	Wach's Water Valve, Not Located, Hydrant Branch
⊕	Fire Hydrant with Branch Valve
□	Water Fitting, Cap
○	Water Fitting, Reducer
⊕	Water System Valve, Inline
⊕	Water System Valve, Tapping
○	Water Flush Hydrant
○	Water System Point, Irrigation
○	Water System Point, Domestic
—	Water Service Line, Domestic, Active
—	Water Service Line, Fire, Active
—	Water Service Line, Flush Stand, Active
—	Water Service Line, Hydrant, Active
—	Water Service Line, Irrigation, Active
—	Water Main, 12"
- - -	Water Main, 2"
—	Water Main, 8"
—	Water Main, 6"
—	Water Main, 4"
- - -	Water Main, 3"
⊕	Private Water System Valve, Inline
⊕	Private Water System Valve, Tapping
⊕	Private Water Control Valve, Back Flow
⊕	Private Water Control Valve, Double Check
- - -	Private Service Line, Domestic
- - -	Private Service Line, Fire
- - -	Private Service Line, Irrigation
□	ECUA Easements
—	State Roads
□	Easements
□	Escambia County Right of Way
□	Escambia County Parcels
□	Well Head Protection Area 20 Year

1 inch = 100 feet
Date: 8/14/2020

DISCLAIMER: The Emerald Coast Utilities Authority maps/data are informational records of the approximate location of ECUA Water and/or Sewer Facilities. No representation is made as to its accuracy, and ECUA disclaims any and all liability with respect to any information shown; which may or may not include water and sewer facilities not owned by ECUA. ECUA provides this service for information purposes only and it is not to be used for development of construction plans or any type of engineering services based on information depicted herein. These maps/data are not guaranteed accurate or suitable for any use other than that for which they were gathered. Any use of this information by any other organization for any other purpose and any conclusions drawn from the use of this data is strictly the responsibility of the user.

